



The ESWT system
Advanced Shock Wave Technology
for traumatology and sports medicine

orthogold280^{ASWT}



A Company of  TRT

ESWT - with orthogold280 - A

As the number of indications suitable for ESWT grows, ESWT with **orthogold280** is becoming increasingly accepted as an effective alternative to surgery and pain medication.

The **orthogold280** is easily controllable through a detachable operating panel. Its flexible therapy head can be adjusted to any position with the push of a button ensuring optimal treatment parameters for every indication. Integrated wheels provide mobility for easy transport and use throughout therapy centres.



Targeting options

- Laser-Pointer for easy and secure positioning of the therapy head
- X-ray targeting support
- Ultrasound positioning system
- Biofeedback



Success Story in Orthopaedics

orthogold280: The Effective Alternative

Extracorporeal shock wave therapy with orthogold280 is the non-invasive, ambulatory alternative to surgical intervention with virtually no side effects. It is clinically proven to effectively treat numerous orthopaedic indications, including chronic, non-healing bone fractures which experience a healing rate of over 80% with the orthogold280 making it an efficient and economical alternative to surgery.

The therapy system was especially developed for orthopaedics, traumatology and sport-specific medical centres. Its unprecedented range of operation and large penetration depth (up to 75 mm) make orthogold280 suitable for low as well as high energy treatments and facilitates treatment of a wide range of orthopaedic indications.

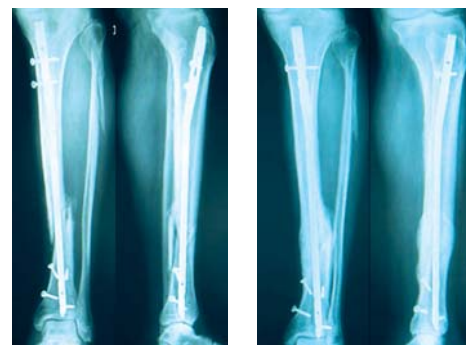
Ultimate Treatment Quality with ASWT

orthogold280 is equipped with the advanced shock wave technology (ASWT), which reduces the tensile portion of the shock waves thus minimizing adverse effects. The orthogold280's unique high positive shock wave energy guarantees the best possible treatment quality and results. Further, the patented SmartTrode electrode provides consistent shock wave performance.



Orthopaedic ESWT indications

- Delayed healing fractures and pseudarthrosis (also in the infected state)
- Impingement syndrome with and without calcification
- Epicondylopathia humeri radialis and ulnaris (tennis elbow / golfer's elbow)
- Hip necrosis
- Patella tendon syndrome
- Achillodynia
- Plantar fasciitis (heel spur)
- Induration penis plastica (IPP)



orthogold280^{ASWT}



Technical Data

Applicator 280

Therapeutic Focus fz (-6dB):	0 - 75 mm
Energy Flux Density (ED):	0.02 - 1.80 mJ/mm ²
Focus Energy (E total / -6dB):	0.1 - 41 mJ

Dimensions:	915 x 670 x 990 mm
Power Supply:	230 Volts / 50 Hz or 115 Volts / 60 Hz
Power Input:	500 VA
Repetition Rate:	1 - 5 Hz
Weight:	152 kg

MTS Europe GmbH and Tissue Regeneration Technologies LLC are at the forefront of non-invasive healing and tissue regeneration through intelligent shock wave application.

Our interdisciplinary team of physicians, biologists, physicists and engineers collaborates with world-renowned universities and scientific research institutions to develop and establish new standards of treatment for poorly-served indications.

Our international network of partners and distributors provides the highest level of customer service, reliability and expertise.

Experience the new gold standard - intelligent shock waves for better quality of life.

A Company of TRT U.S.A.



MTS Europe GmbH
Robert-Bosch-Strasse 18
78467 Konstanz, Germany
Phone +49 (0) 75 31 - 361 85 - 0
Fax +49 (0) 75 31 - 361 85 - 70
info@mts-medical.com
www.mts-medical.com



A Company of  TRT