

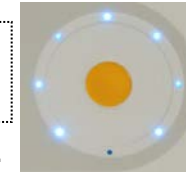
Starting your device OW100®

- Standby mode will be started after switch on the power switch of the device.



- To switch **ON** the device, keep the yellow button press until device starts.

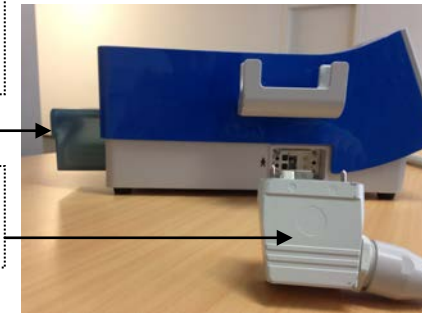
Step 1 Switch On device



Operational Procedure:

- Switch "**ON**" device.
- Attach water cartridge to device.
- Plug applicator to device.
- Press "**FILL**" Button to fill the Applicator.
- Set up "Treatment Parameters".
- Start treatment.
- Stop treatment.
- Press "**DRAIN**" button to drain water from applicator.
(Lift up applicator to drain completely all water from applicator lines).
- Press "**SETUP**" button to go to SETUP Screen.
- Press "**CARTRIDGE**" button to eject cartridge.
- Press "**APPLICATOR**" button to remove applicator from device.
- Press "**BACK**" button to return to Main Screen.
- Press "**Yellow**" button until device switches off.
- Switch the power switch off to turn off completely your OW100® Shockwave device.

Step 2 Attach Cartridge

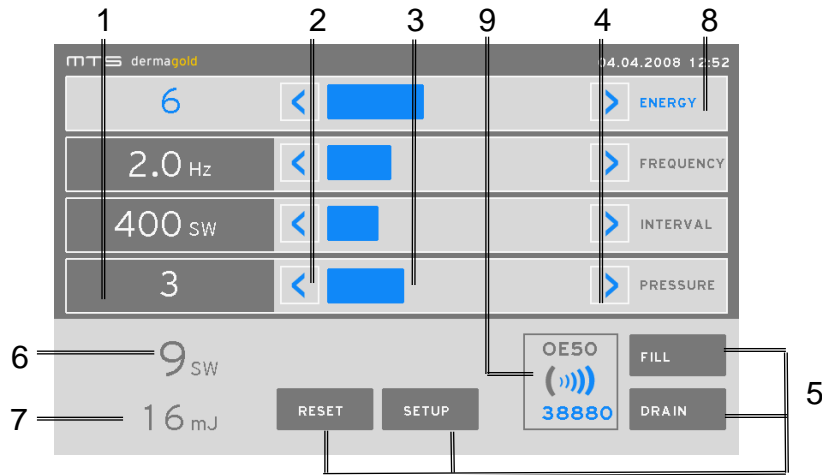


Step 3 Plug Applicator



Main Screen

To adjust treatment parameter you can use the touch panel or the touch wheel.



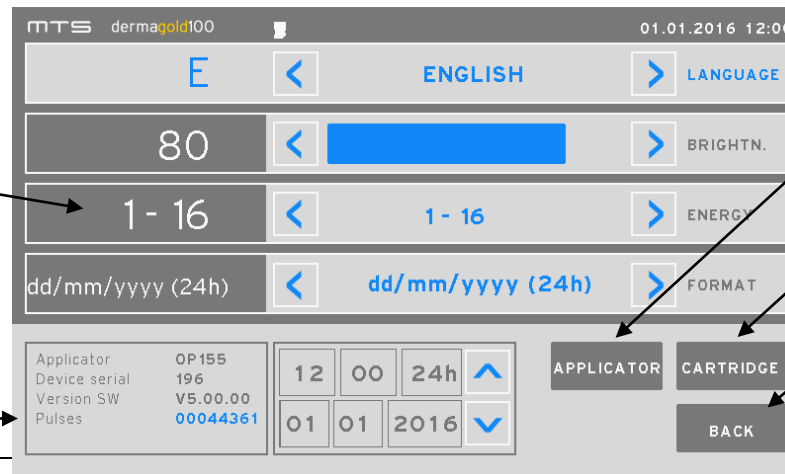
- 1 Currently set values
- 2 Key field „Arrow“ to decrease a value
- 3 Key field „Bar“ to set a value and for a short overview in which area the set value is (min. - max.)
- 4 Key field „Arrow“ to increase a value
- 5 Key field to switch functions
- 6 Display of the applied shock waves
- 7 Display of the applied total energy (of the applied shock waves)
- 8 Selected key field (blue highlighted)
- 9 Display for the identification of the connected applicator and the number of available total shock waves.

Setup Screen

Option to change how to show Energy levels :
1-16 // Mj // Mj / mm²

Device Information:

- Applicator Type
- Device S/N
- Software Version
- Total SW Counter



Button to Eject Applicator

Button to Eject Cartridge

Button to go back to Main Screen

Attention: The Instruction for Use OW100 Part 1 and Part 2 belongs to this document and has to be observed

Using The Applicator

There are 2 ways to release Shockwaves with the applicator:

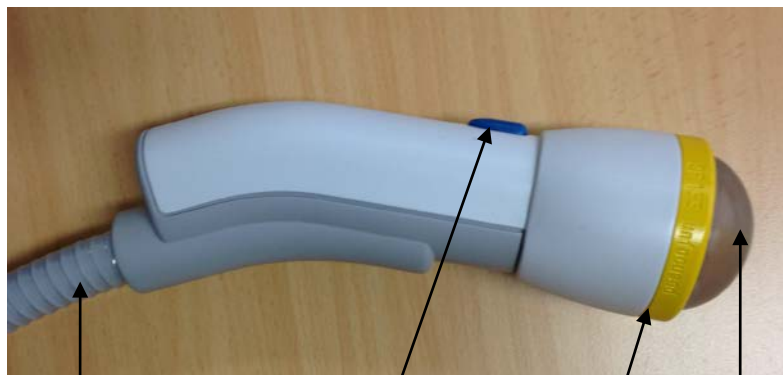
- Pressing the button

Shockwaves will be released meanwhile applicator button is pressed.

- Double Click button function

Shockwaves will be released continuously until the Shockwaves interval pre-set up is reached.

Example: Interval set at 500, applicator will release 500 Shockwaves and then it will stop automatically.



Applicator Tube

Applicator Button

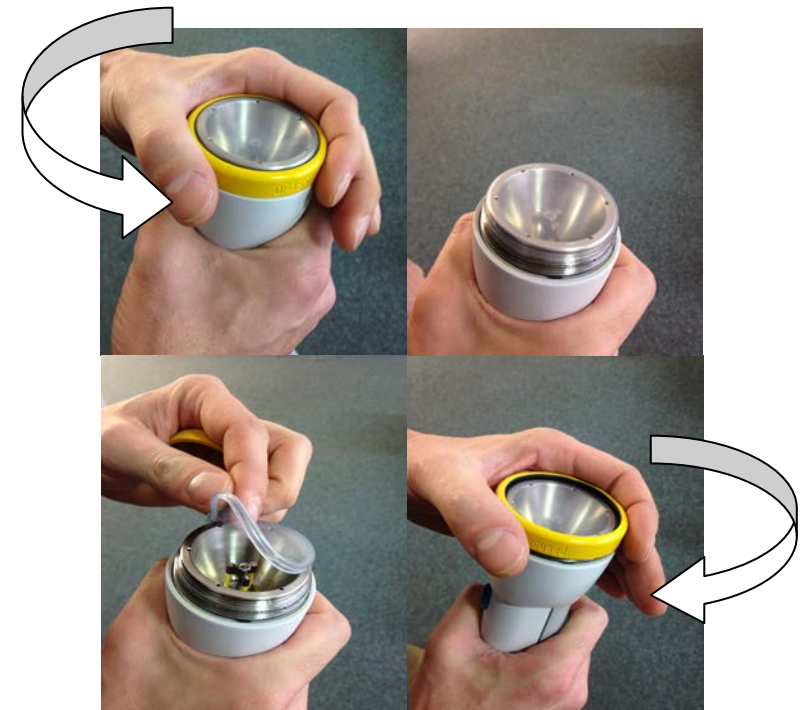
Membrane


Membrane Ring

Do not kink the "Applicator Tube" to avoid damages.

Membrane Replacement

When membrane needs to be replaced, unscrew by hand the Blue/Yellow membrane ring, place new membrane and screw back the Blue/Yellow ring. See pictures attached.



	IFU (Instruction for Use)	Dokukennung_Titel_Revision (Code_Titel_Revision) MTS_OW100_IFU_Quick-Guide_E_A	
	OW100 QUICK USER GUIDE	Ausgabedatum (Date of Release) (TT.MM.JJ) 19.04.2016	Seite (Page) 4 / 4

Your OW100 may display some messages:

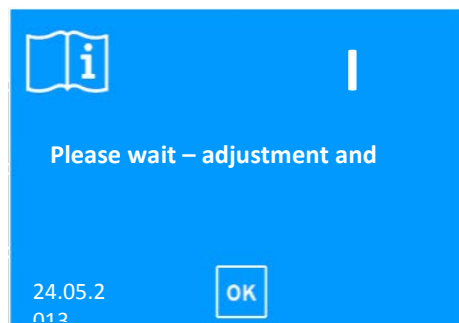
Message Types:

Interference and/or failure states of operation of the device are displayed with error messages including error code.

There are 3 different categories of messages:

INFORMATION:

This textbox means information. Thereby exist 2 categories of information: one to be confirmed, and one shown short at the display. Info messages are specified by a code i and a 3-digit number.



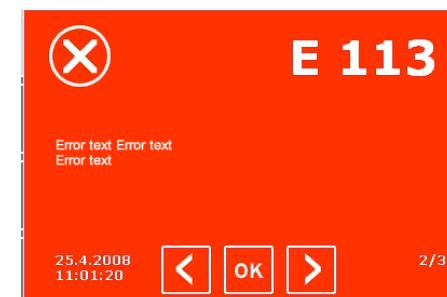
WARNING:

This textbox means warning. If not solved by pressing o.k., switch the device off and on. Warning messages are specified by a code W and a 3-digit number.



ERROR:

This textbox means fatal error. If not solved by pressing o.k., switch the device off and on. If the error appears again, call service. Error messages are specified by a code E and a 3-digit number.



**If an Warning or Error message is shown twice, there will not appear the “OK” button.
This is meant to avoid continuing working with the device before restarting it.**

Attention: The Instruction for Use OW100 Part 1 and Part 2 belongs to this document and has to be observed